



RG

M a k e o v e r s

www.rachnamakeovers.com



KRYOLAN MAKEUP

KRYOLAN EXTRA LIGHT	3000/-
KRYOLAN PARTY	4000/-
KRYOLAN ENGAGEMENT	7000/-
KRYOLAN ENGAGEMENT [AB]	8000/-
KRYOLAN BRIDAL	10000/-
KRYOLAN BRIDAL [AB]	11000/-

MAC

MAC PARTY	5500/-
MAC PARTY [AB]	6500/-
MAC ENGAGEMENT	10000/-
MAC ENGAGEMENT [AB]	11000/-
MAC BRIDAL	13500/-
MAC BRIDAL [AB]	14500/-

CHANEL

CHANEL PARTY	7000/-
CHANEL PARTY [AB]	8000/-
CHANEL ENGAGEMENT	12000/-
CHANEL ENGAGEMENT [AB]	13000/-
CHANEL BRIDAL	16000/-
CHANEL BRIDAL [AB]	17000/-

	LIGHT	HEAVY
LASHES	350/-	450/-
DRAPING	550/-	
LENS	350/-	
	HALF	FULL
PHOTO SHOOT	1500/-	2500/-





HAIR STYLES

	SHORT	MEDIUM	LONG
BLOW DRY	500/-	600/-	700/-
SIMPLE BUN	400/-	450/-	500/-
STRAIGHTENING	500/-	600/-	700/-
BEACH WAVES	450/-	550/-	700/-
SIMPLE CURLS	450/-	500/-	550/-
CURLS+FRONT	500/-	550/-	600/-
BRAIDS	650/-	700/-	750/-
FASHION BRAIDS	750/-	850/-	950/-
MESSY BUNS	750/-	850/-	950/-
HIGHEND FASHION	900/-	1000/-	1100/-

HAIR CUT

TRIM	500/-
HAIR CUT [LADIES]	700/-
HAIR CUT [KIDS]	400/-

HAIR WASH

	SHAMPOO	CONDITIONER	MASK
SCHWARZKOPF	150/-	200/-	250/-
LOREAL	150/-	150/-	200/-
WELLA	200/-	200/-	250/-
MOROCCAN OIL	300/-	800/-	400/-
KERATIN WASH	400/-	400/-	--
GK	300/-	300/-	--
WELLA PLEX (ADD ON WITH COLOR)	--	2000/-	--

HAIR TREATMENTS

	SHORT	MEDIUM	LONG
OIL MASSAGE	400/-	450/-	500/-
MOROCCAN OIL	600/-	700/-	800/-
LOREAL POWER MIX	1200/-	1600/-	2000/-
KERATIN	5000/-	6000/-	7000/-



HAIR SPA

	SHORT	MEDIUM	LONG
LOREAL	1000/-	1200/-	1500/-
MOROCCON OIL	2200/-	2600/-	3000/-
WELLA	1400/-	1600/-	1800/-
WELLA PLEX	2200/-	2500/-	2700/-
WELLA ELEMENTS	1200/-	1400/-	1500/-





FIBER CLINIX
ANTI HAIRFALL
ANTI DANDRUFF

SCHWARZKOPF

SHORT	MEDIUM	LONG
1500/-	1800/-	2000/-
1500/-	--	--
1500/-	--	--

HAIR COLOR

	SHORT	MEDIUM	LONG
ROOT TOUCH UP	--	1400/-	--
NO AMMONIA	--	1600/-	--

GLOBAL

	SHORT	MEDIUM	LONG
BASIC	3000/-	4000/-	5000/-
BASIC [NO AMMONIA]	4000/-	5000/-	6000/-
FASHION	4500/-	5500/-	6500/-



HIGHLIGHTS-

	SHORT	MEDIUM	LONG
PER STREAK	--	500/-	--
FULL HIGHLIGHTS	4000/-	5000/-	6000/-
PER CHUNK	800/-	900/-	1000/-
CROWN AREA	3000/-	3500/-	4000/-
GLOBAL+HIGHLIGHTS	8000/-	9000/-	10000/-
BALAYAGE	6000/-	7000/-	8000/-
OMBRE	4500/-	5500/-	6500/-





Hair Cave



HAIR CHEMICAL WORK

	SHORT	MEDIUM	LONG
SMOOTHENING	5500/-	6500/-	7500/-
REBONDING	6500/-	7500/-	8500/-



MANICURES

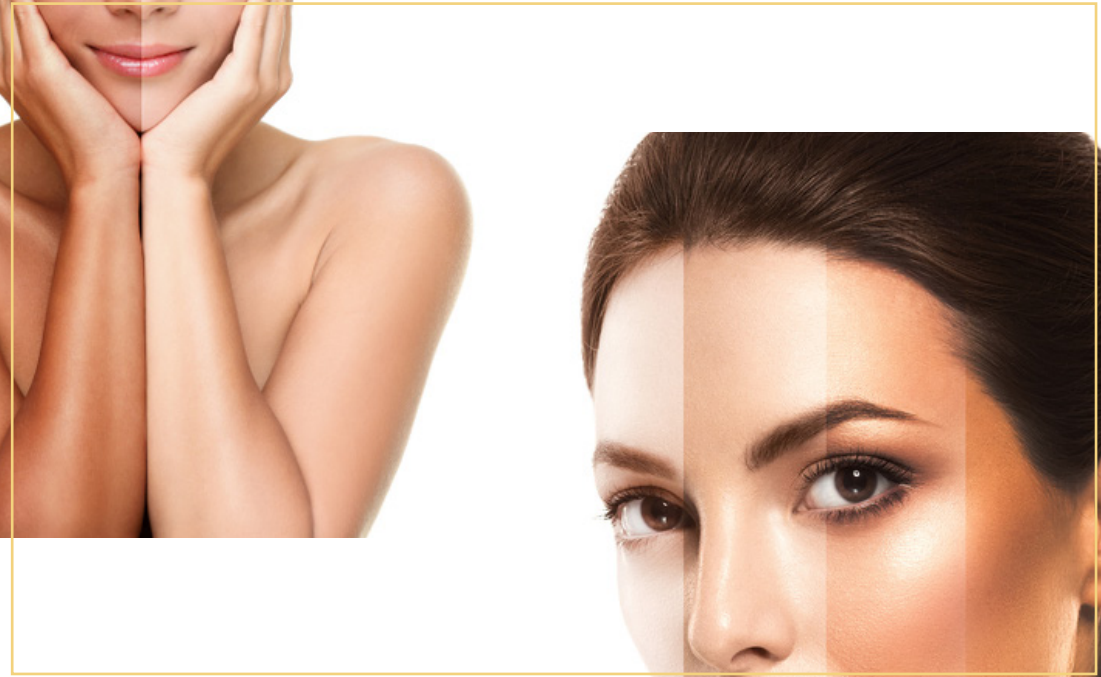
FRUIT	500/-
LOTUS CITRUS	600/-
MENTREE	700/-
U-SHINE LUXURIOUS	900/-
KENPEKI	1000/-

PEDICURES

FRUIT	600/-
LOTUS CITRUS	700/-
MENTREE	800/-
U-SHINE LUXURIOUS	1000/-
KENPEKI	1100/-



B E A
U T Y



BLEACH /D-TAN

	D-TAN	BLEACH
UNDER-ARMS	200/-	250/-
FACE	350/-	400/-
FACE-NECK-BACK	400/-	500/-
ARMS	450/-	550/-
LEGS	600/-	700/-
ABDOMEN	500/-	600/-
FULL BACK	700/-	800/-
FULL BODY	1800/-	2000/-

FACE

	THREADING	WAX
UPPER LIPS	30/-	50/-
EYEBROWS	50/-	50/-
FOREHEAD	50/-	60/-
CHIN	30/-	50/-
SIDE LOCKS	50/-	100/-
FULL FACE	150/-	250/-

WAXING

	NORMAL	RICA
UNDER-ARMS	10/-	150/-
FULL FACE WAX	300/-	350/-
HALF ARMS	350/-	400/-
FULL ARMS	400/-	550/-
HALF LEGS	400/-	500/-
FULL LEGS	600/-	700/-
FULL BACK	500/-	600/-
ABDOMEN	300/-	400/-
FULL BODY	1800/-	2500/-
BIKINI LINING	400/-	600/-
BIKINI	1300/-	1600/-



CLEAN-UPS

FRUIT CLEAN-UP	1000/-
BLOSSOM KOCHHAR	1000/-
LOTUS CLEAN-UP	1200/-
O3+ CLEAN-UP	1300/-
CASMARA CLEAN-UP	1500/-
OZONE	1500/-
KANPEKI CLEAN-UP	1300/-





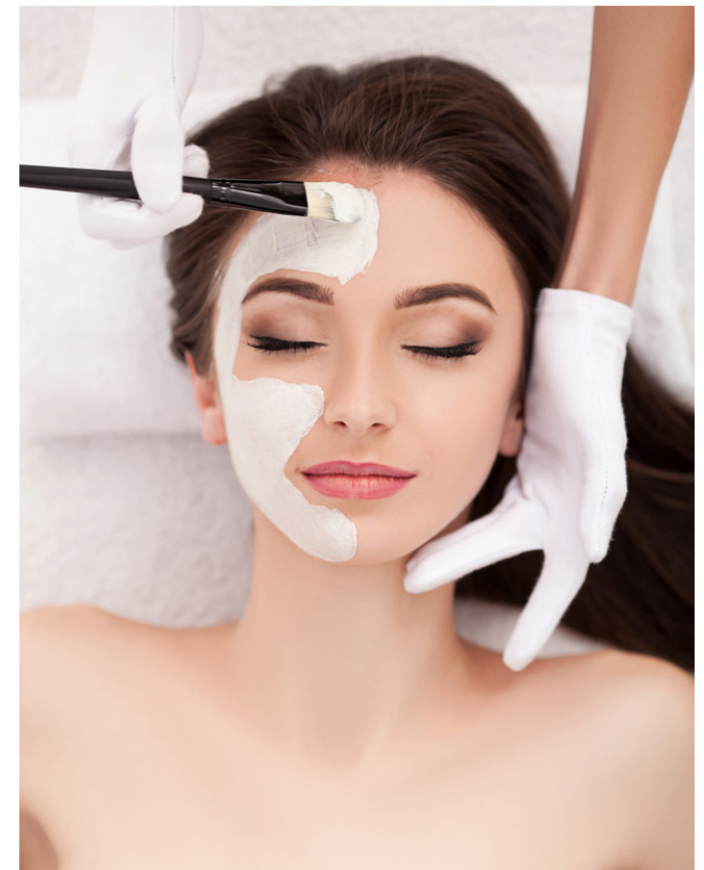
FACIALS

PREMIUM

FRUIT	1500/-
LOTUS HYDRAVITALS	2000/-
LOTUS PURAVITALS	2000/-
BLOSSOM KOCCHAR	2000/-
CHERRYL'S D-TAN FACIAL	2000/-
LOTUS GOLD SHEEN	2500/-
LOTUS INSTAFAIR	3000/-
LOTUS DE-PIGMENTATION	3500/-
LOTUS 24K GOLD	3000/-
O3+ WHITENING	3000/-
LOTUS ANTI-AGEING	3500/-

LUXURY / BRIDAL

CASMARA [ANTI AGEING LUXURIOUS]	4000/-
LOTUS ULTIMO	4000/-
O3+ DIAMOND	4500/-
CASMARA [BRIDAL]	5000/-
OZONE [BRIDAL]	5000/-
KANPEKI WHITENING	4000/-
KANPEKI GLOW	4000/-





BODY

B O D Y M A S S A G E

OIL MASSAGE	1500/-
HYDRATING CREAM	2000/-

B O D Y P O L I S H I N G

FRUIT	2000/-
LOTUS CRYSTAL	2500/-
CHOCOLATE & WINE	3500/-





NAILS

NAIL ART [PER FINGER]	60/-
CHROME [PER FINGER]	60/-
NAIL REPAIR	150/-
SINGLE EXTENSION REPLACE	300/-
NORMAL NAIL PAINT APPLICATION	300/-
EXTENSION REMOVAL	400/-
REVOVAL WITH DRILL	400/-
OMBRE	600/-
ONLY GEL POLISH	1200/-
GEL FRENCH NAILS	1400/-
REFILL WITH GEL POLISH	1500/-
REFILL FRENCH	1600/-
NAIL EXTENSION WITH SIMPLE NAIL PAINT	1600/-
NAIL EXTENSION WITH GEL POLISH	2500/-
NAIL EXTENSIONS WITH FRENCH NAILS	3000/-

Monthly Package

D-TAN [F/N/B]	400/-
WAXING - [FL/FH/UA]	1400/-
FACIAL [PREMIUM]	2000/-
THREADING [UL/EYEBROWS]	100/-
MANICURE	500/-
PEDICURE	600/-

PACKAGE COST 5,000

DISCOUNTED PRICE **3,750**



Bridal Package

BLEACH [FULL BODY]	2000/-
FACIAL	5000/-
BODY POLISHING	2500/-
WAXING [FH/FL/UA/BIKINI]	2500/-
MANICURE [BOMB]	900/-
PEDICURE [BOMB]	1000/-
NAIL ART & EXTENSION	2500/-
THREADING [UL/EYEBROWS]	100/-
HAIR CUT	700/-
HAIR SPA [WELLA]	1400/-
BRIDAL	16000/-

PACKAGE COST **34,600**

DISCOUNTED PRICE **25,950**





MEHENDI

BOTH HANDS

KIDS MEHENDI	250/-
SIMPLE MEHENDI	500/-
FESTIVAL MEHENDI LIGHT	750/-
OCCASION MEHENDI	1500/-
ENGAGEMENT MEHENDI	4000/-
BRIDAL MEHENDI	6000/-

BOTH LEGS

SIMPLE MEHENDI	1000/-
FESTIVAL MEHENDI	1500/-
ENGAGEMENT MEHENDI	4000/-
BRIDAL MEHENDI	6000/-

FIGURES

BOTH HANDS	3000/-
BOTH LEGS	4000/-



Venue Makeups

VENUE MAKEUPS CAN BE BOOKED FOR BRIDAL , ENGAGEMENT AND PARTY MAKEUPS .

[ONLY CHANEL AND MAC PARTY MAKEUPS CAN BE BOOKED FOR VENUE]

UPTO 2 KM	200/-
UPTO 5 KM	300/-
UPTO 10 KM	500/-
ABOVE 15 KM	800/-

Please Note – Makeup charges need to be cleared before team leaves for venue.

Any Extra Party Makeups Added on the Spot Will Be Charged

According to Studio Charges

Cost for Lens – Rs 300

Cost for Eyelashes – Rs 300

Cost for Hair Accessories – Ranges Between Rs. 250 to Rs. 2500



Outstation Makeups

OUTSTATION MAKEUPS CAN BE BOOKED FOR MAC & CHANEL BRIDAL/ENGAGEMENT MAKEUPS ONLY

PACKAGE FOR

CHANEL BRIDAL/ENGAGEMENT 16000/-

PACKAGE FOR

MAC BRIDAL/ENGAGEMENT 15000/-

Mac Party Makeups Can Be Booked With Bridal Makeups – Rs 3000 each (Just for Outstation)

Outstation Charges – Tickets, fooding, lodging of the staff will have to be bared by the client

Please Note – Makeup charges need to be cleared before team leaves for outstation

A copy of the invitation card and a scan of 2 photo ID of the client needs to be mailed to rachnagmakeovers@gmail.com while getting the tickets booked for the staff

Cost for Lens – ₹ 300

Cost for Eyelashes – ₹ 300

Cost for hair accessories – ranges between ₹ 250 to ₹ 2500

RG

MAKEOVERS



Call Us: +91 96287 72877

www.facebook.com/RG-Makeovers-105969168138164



RACHNA MAKEOVER